

Separation and Disposal of Garbage

Separation turns
Garbage into
Resources!

Dispose of garbage on weekdays and follow the rules of each collection location!

Paper Waste Don't put it into "Burnable Waste"

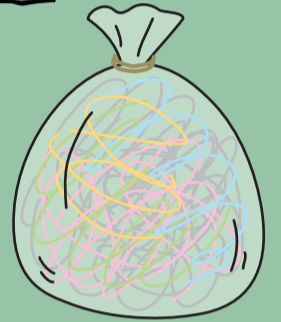
Please shred all unclassified copy-use papers, etc. and put it for sale along with magazines, etc.

Paper for Recycle (To Be Sold Off)

Magazines, Wrapping Paper, Envelopes, Shredder Waste, Copy papers that are not confidential

Newspapers, Fliers

Cardboard Boxes



※For details consult the poster about the separation and disposal of paper waste!

Burnable Waste

Use the red designed bag (1 45L bag is 70 yen)

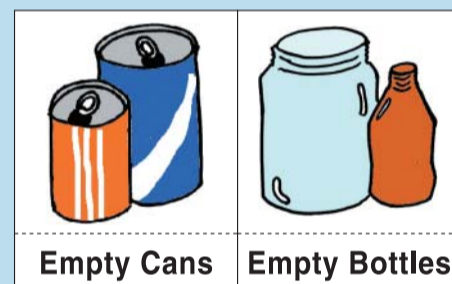


Back Sided Carbonated Paper, Thermal Paper, Photos, Glazed Paper, PET Bottle Labels

Garbage generated at the university is regarded as "Business Garbage" and uses a different sorting process than household garbage. At the university, recyclable plastics are treated as "Burnable Waste".

Bottles/Cans

Use the blue designed bag (1 30 L bag is 40 yen)



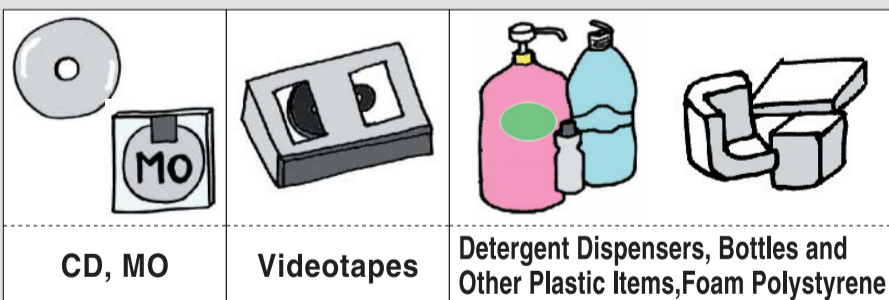
Please crush empty cans in order to decrease the volume of waste



• Chemicals and spray cans will be treated as Other Garbage Not Shown Above

Not-Recyclable Plastics

Use a transparent or semi-transparent bag



• Smaller than 50 × 50 × 50cm

PET Bottles (To Be Sold Off)

Use a transparent or semi-transparent bag

- Rinse out the inside!
- Remove the label and dispose of it in "Burnable Waste"



Other Garbage Not Shown Above

• Refer to the rules of each department

