

Autumn guidance

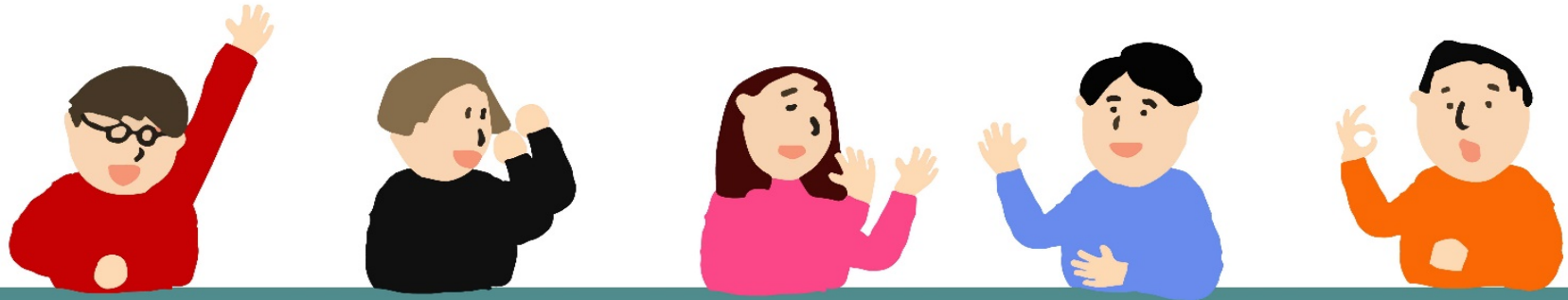


Today's explanation

1. Please let us know your voice (questionnaire)
2. About taking classes from the second semester
 - Face-to-face classes
 - In taking online classes
 - Q & A about online classes and PCs
 - Registration schedule in the second semester
 - Handling of fraudulent activities in final exams, etc.
 - About school cancellation
3. About taking the TOEIC® L&R IP TEST
4. About e-START/e-START+ Program
5. About extracurricular activities

Only for u
student

Please let us know your voice



The spread of the COVID-19 is having a major impact on your campus life. In particular, I think that many of you who newly entered our university this year have anxiety and a feeling of loneliness.

As we expand face-to-face classes in the third term from October, please let us know your voice in order to enhance the support necessary for maintaining physical and mental health.



Questionnaire about student life

In order to enhance the support necessary for maintaining physical and mental health, we would like to hear the opinions of individuals in addition to the opinions we received earlier, so we will conduct the following questionnaire from **Thursday, October 1st to Thursday, October 15th**. Please be sure to answer as the campus life will change depending on your opinions.

【 Questionnaire URL about student life 】



If you have anxiety or worries, please do not hesitate to consult with your tutor, student support office staff, Health Service Center, etc.

- All-Purpose Counseling Center for Students : 082-424-6181
gakusei-senmon@office.hiroshima-u.ac.jp
- Health Service Center : 082-424-6192 health@hiroshima-u.ac.jp

About taking classes from the second semester

Due to the spread of COVID-19 this year, we have no choice but to limit the activities of the university.

All classes in the first term are conducted online, and in principle, classes in the second term are also online except for experiments and practical training. The three terms, which will start from October 2, will be held face-to-face, focusing on specialized subjects for first-year students and graduate school classes, and classes with 20 or less students, within the range where sufficient infection prevention measures can be taken.

Which class will be held face-to-face?

Which classes will be held face-to-face will be posted on MOMIJI Top in sequence, so please check regularly along with the syllabus and notices on My MOMIJI.

(Where the classes to be conducted face-to-face be posted)

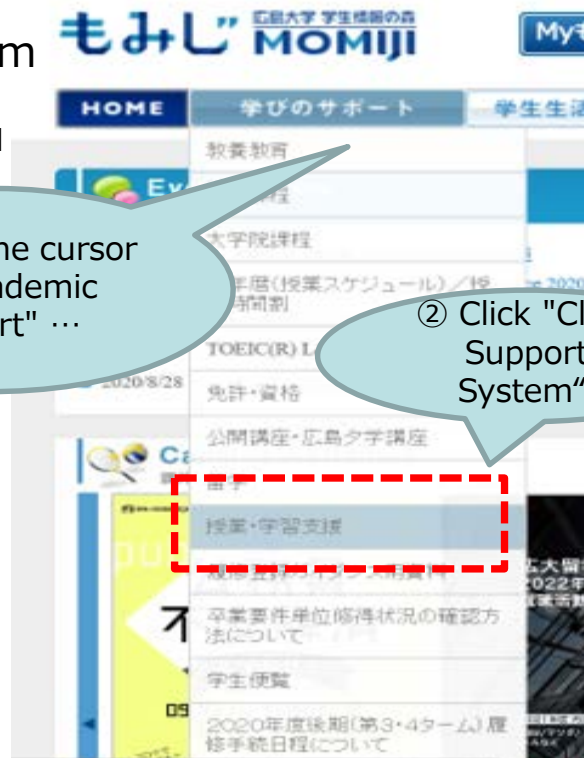
「MOMIJI Top」

- Academic Support
- Class Support System

<https://momiji.hiroshima-u.ac.jp/momiji-top/en/learning/class-support-system.html>



【For PC】



① Place the cursor on "Academic Support" ...

② Click "Class Support System".

【For Smartphone】



Tap "≡" and select "Academic Support" → "Class Support System".

About taking classes from the second semester

Due to the situation of COVID-19 in the future, dangerous commuting to school due to typhoons, disasters, etc., we may switch to online classes.

Students may not be able to enter the campus, so please prepare an environment where you can take classes at home. If that is difficult, please consult with the student support staff of your school / graduate school before the start of the third term.

In addition, we will introduce precautions when taking classes online, actual cases, and questions asked by everyone.

In taking online classes

Consider the privacy and personal information of yourself and other students

- When taking interactive classes, **turn off the microphone and camera before attending**. Others can see where you are taking classes, such as your room, or hear the sounds of your life. However, if your instructor tells you to turn on the microphone or camera for attendance confirmation or discussion, follow those instructions.
- While attending an online class with Microsoft Teams, other people's names and email addresses will be displayed on the screen, but due to Teams specifications, they cannot be hidden. **If you make unilateral contact using the displayed information, you may be subject to disciplinary action. Please do not misuse the information.**


Do not post materials or URLs shared in class on SNS etc. without permission

- Teaching materials, reference materials, lesson videos, URLs, etc. for online classes are distributed and shared on the assumption that they will be used in the classes. Do not share beyond that range.
- The teaching materials, materials, and lesson videos are also copyrighted. Posting on SNS etc. without the permission of the right holder constitutes copyright infringement.


In taking online classes

In the online class held in the 1st and 2nd terms, we will introduce actual cases and advice from faculties. Please use it as a reference when you take classes online in the future.


Shared the video of the lesson using Dropbox

 You can download and watch it, but please be careful about the copyright after downloading


Considering the deadline for submission because having set excessive assignments in other classes on the same day

 When giving assignments, make sure that they are appropriate to promote understanding of the class content while avoiding an excessive burden on students

There was a student who did not meet the deadline for submitting the assignment and worked on it all at once just before the end of the term.

 The learning outcomes will eventually come back to you. Keep the submission deadline properly

When I lowered the resolution due to the data capacity, it became difficult to see the subscripts on the board, so I uploaded a photo of the board separately from the video.

 If the materials or videos are difficult to read, please feel free to consult with the instructor in charge of the lesson

Q & A about online classes and PCs

Q. I'm using Microsoft Teams, but when I turn on my microphone, it becomes difficult to hear because the voice of others is interrupted.

⇒ The sound from the PC may be echoing in the room and the sound condition of the entire lecture may be worsening (howling is occurring), so please use earphones to take the course.

Q. Difficult to access Bb9.

⇒ We have strengthened the server of Bb9 and it is now improved. However, if you download the materials all at once at the beginning of the class, the communication status of Bb9 will deteriorate and it may affect other classes, so please download the handouts etc. in advance and prepare for it. In addition, securing communication capacity is an important issue for stable class distribution. Please refrain from watching videos for entertainment purposes or using data communication on SNS or online games using the university network.

Q. Since I don't have a printer at home, I would like you to upload materials such as resumes by the day before to secure time to go to print.

⇒ Ask the instructor in charge of the class to consider uploading the handouts by the day before the class.

Q & A about online classes and PCs

Q. I'm worried because I'm not sure if antivirus software is working properly.

⇒ Please refer to page below for how to set up automatic update of antivirus software and check for full scan.

(Hiroshima University Official Website Top Page)

- ABOUT HU
 - HU Initiatives
 - Information Policy - Action to information-oriented university -
 - About a Laptop as a Requisite Tool
 - Startup Workshop for Your Laptop

<https://www.riise.hiroshima-u.ac.jp/fresta/2020/>



Q. When I have a PC problem, I'm worried if I can solve it myself.

⇒ We accept consultations on the ICT environment (computer and internet) necessary for taking online classes at "Support for attending online classes by student staff (reservation required)". Please use it positively.

<https://www.media.hiroshima-u.ac.jp/services/edu-support-3/online/>



Also, if you have any trouble during class, please contact the faculty in charge of the class or TA.

Please tell us the situation using the chat function.

Registration schedule in the second semester

- The course registration is done on the Web using "My MOMIJI".
- Details such as the course period and points to note are posted on the "MOMIJI Top".

「MOMIJI Top」

— Academic Support

— Course registration period for the 2nd(Fall) semester of the academic year of 2020



【Course registration period for the 2nd(Fall) semester, 2020】

Subjects		Course registration period
<ul style="list-style-type: none"> • 3rd term classes • 4th term classes • Semester classes in the second semester • Intensive course 	Liberal arts education program Common graduate courses	From September 25, 0:00am to October 8, 11:59pm. ※【Liberal arts education program】From September 29, 0:00am to 11:59pm, registration is not possible due to the adjustment period. ※【Common graduate courses】From October 5, 0:00am to 11:59pm, registration is not possible due to the adjustment period.
	Specialized education program	From September 25, 0:00am to October 8, 11:59pm.
<ul style="list-style-type: none"> • 4th term classes • Intensive courses offered after the 4th term 		From December 1, 0:00am to December 7, 11:59pm. ※From December 3, 0:00am to 11:59pm, registration of Liberal arts education program and Common graduate courses are not possible due to the adjustment period. ※It is also possible to delete the 4th term course registered during the course procedure period in September and October.

Handling of fraudulent activities in final exams, etc.



1 The handling of courses taken in **the relevant period** for those who commit fraud in the final exams, etc. shall be as follows.

1st semester

(1) Those who commit fraud in the examination of Liberal arts education subjects shall be evaluated as "Poor: less than 60 points (fail)" for all liberal arts education subjects. However, "Introductory Seminar for First-Year Students" is excluded.

(2) Those who commit fraud in the examination of Specialized education subjects shall be evaluated as "Poor: less than 60 points (fail)" for all Specialized education subjects.

2 Those who commit fraud in the final exams will be disciplined according to the Hiroshima University Student Disciplinary Rules.

For example, if there is any misconduct in the 4th term specialized education subject, the grade evaluation of all the specialized education subjects (3rd term, 4th term, 2nd semester and 2nd intensive subjects) taken in the second semester will be [Poor] .

**For online exams, take the exam alone in a quiet environment where you can concentrate on the exam.
It may be considered cheating.**

About the cancellation due to the announcement of weather warnings, etc.

In principle, classes may be canceled all at once on each campus due to the announcement of a special warning from the Hiroshima Local Meteorological Observatory or the judgment of the Executive Vice President (Education).

Whether or not all classes will be canceled **will be posted in the emergency contact column (see the figure below) of "MOMIJI Top", so please act with your safety first**

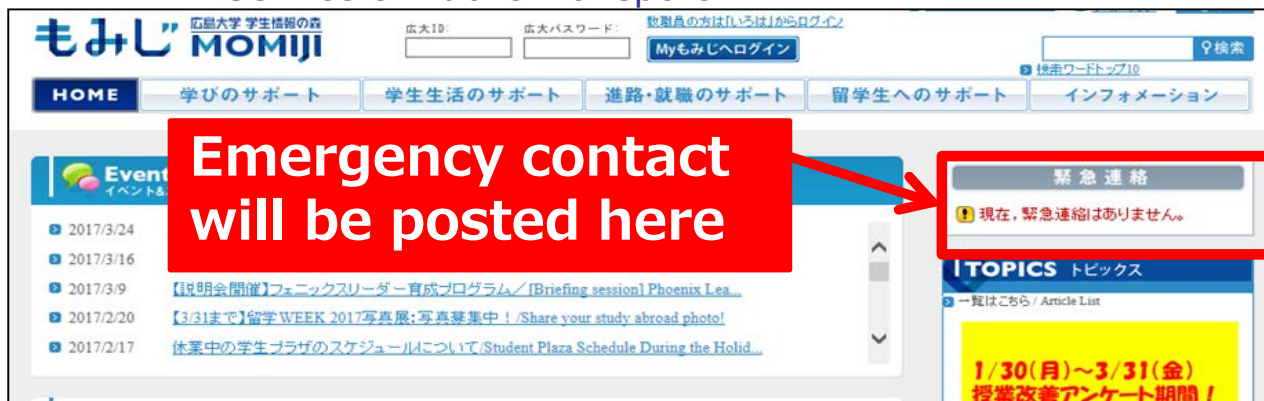
< Judgment time of cancellation and range of class period for cancellation >

- 1) Morning class (Classes starting from 8:45 to 12:10) : By around 6:45
- 2) Afternoon class (Classes starting from 12 : 50 to 17 : 05) : By around 10:50
- 3) Night class (Classes starting from 17 : 30 to 19 : 40) : By around 16:00

For details, refer to the following page of "MOMIJI Top".

「MOMIJI TOP」

- Academic Support
- University-wide Simultaneous Class Cancellation Associated With Incidents Such as Issuance of Weather Warnings, or Suspended Service of Public Transport

もみじ MOMIJI

HOME 学びのサポート 学生生活のサポート 進路・就職のサポート 留学生へのサポート インフォメーション

緊急連絡

現在、緊急連絡はありません。

1/30(月)~3/31(金) 授業改善アンケート期間!

You can also check the information on Hiroshima University official Twitter and official Facebook. If you cannot access any of them, please contact your student support office.

About taking the TOEIC® L&R IP TEST

- HU is working to develop human resources who can respond to globalization, and as part of this, the TOEIC ® L & R IP test is being conducted in the university. The next exam is scheduled for December for 3rd and 4th grade students, and **even 1st and graduate students can take the exam free of charge.** In order to improve your language skills, it is important to continuously measure your language skills on the same scale, so please do not miss this opportunity to apply positively. (It may be on a first-come, first-served basis or by lottery.) Details such as how to apply will be announced on the Message on "My MOMIJI" in early November.
- Due to the spread of COVID-19, it will be implemented online in AY2020.

Information on the TOEIC® L & R IP test can also be found on the following pages of MOMIJI TOP.



「MOMIJI TOP」

—Academic Support

—Information on the TOEIC® L & R IP test can also be found on the following pages of Momiji TOP.

About e-START/e-START+ Program



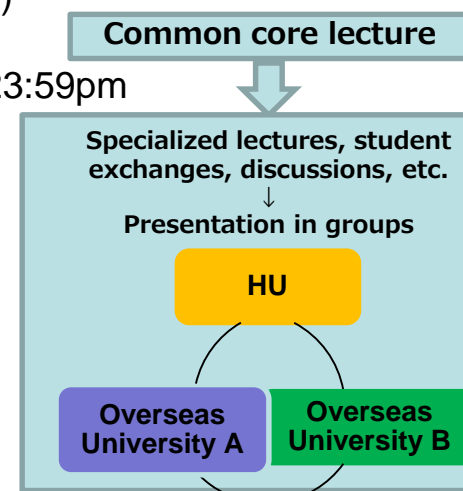
- **Online international education program** without dispatch
- **Acquire qualifications as a global human resource** through collaborative work and exchanges with overseas students, and **raise interest in international exchange and long-term study abroad**
- **You can get the credits**
 - e-START : Liberal arts education program 「Overseas Field Studies」 (2.0 credits)
 - e-START+ : Liberal arts education program 「Overseas Field Studies: Advanced」 (2.0 credits)
- Target students :
 - e-START: 1st year undergraduate student whose student number starts with B20
 - e-START+: 1st to 3rd year undergraduate students whose student numbers start with B20, B19 or B18
- Number of courses : About 10 courses
- Capacity : 10 people x course
- Period : From late November 2020 to end of March 2021 (depending on the course)
- Entry fee : Free
- Application period : Friday, October 16, 2020, 10:00am ~ Thursday, October 29, 23:59pm

Recruitment briefing session

【 Date and time 】Friday, October 16, 12:05-12:45
【 How to participate 】Microsoft Teams

* For details, refer to MOMIJI

Exchange at 3 universities in 2 countries or more!



About participating in extracurricular activities

As part of prevention measures against COVID-19 infection, Hiroshima University currently limits its extracurricular activities only for organizations who have submitted the notification of activities to the university within the academic year 2019 and obtained permission in advance to “resume activities”, for a maximum of 2 hours per day (except for Saturdays, Sundays and national holidays, with some exceptions).

As many of you may have not received sufficient information about extracurricular activities such as the enrollment procedure, we would like to offer you useful information about our extracurricular activity clubs and how you can participate in such activities, through which you can build relationship with various students of different years and departments who have a common interest.

For the contact details of each club, please refer to the following QR code.



【Please be careful about suspicious invitation!】

There are some suspicious groups who come to campus such as subversive cult organizations and a group who introduce themselves as “Hiroshima University Student Self-government Association”. They will mostly talk to you in a kind voice and pretend to be a nice advisor for your student life (about international exchange, learning, good places to eat etc.). If something feels suspicious, please refuse their invitation in a resolute attitude, and do not provide any of your personal information such as SNS, LINE, phone number or address, or by giving your signature on a questionnaire etc.

★Whenever you need consultation, please contact your tutor, person in charge at each student support office, or ‘Help Desk for all your problems’.

‘Help Desk for all your problems’

TEL : 082-424-6181 ※ 9 : 00 through 17:00 on weekdays

Email : gakusei-senmon@office.hiroshima-u.ac.jp

Please check the "MOMIJI" once a day

It is necessary for you to be willing to obtain information in the university.

Information from the university to students will be posted on the Message of "My MOMIJI", so please be sure to log in to "My MOMIJI" once a day to check it.

講義室の利用にあたって



If you have fever or other symptoms, please contact your tutor or academic advisor by email and self-isolate at home.



Continuous ventilation is required.



Be seated at least 1 meter away from the person next to you or in front of you.



Wear a mask.



Be sure to disinfect your hands and wash your hands thoroughly.



Refrain from talking in the lecture room.