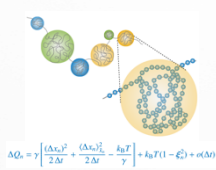
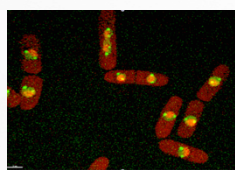


International Summer School on Chromatin Dynamics 2016



DATE: September 1 (Thu.) ~ 4 (Sun.), 2016

**Venue: Research Center for the Mathematics on Chromatin Live Dynamics,
Hiroshima University (Higashi-Hiroshima, Japan)**

The Research Center for the Mathematics on Chromatin Live Dynamics (RcMcD) will provide an introductory course for the biophysics on the chromatin dynamics inside cell nucleus. The course includes the practices for cell image processing and the lectures on physical and mathematical theories for the analysis of the image data. We welcome all the students who are interested in the interdisciplinary studies on cells, irrespective of their disciplines. We will accept the students in the under- and post-graduate courses. Eight foreign participants from the universities having MOUs with us are appointed.

[Schedule]

September 1(THU)	Opening, General Introduction
2 (FRI)	Lecture, Luncheon seminar, and Practical Course (image processing)
3 (SAT)	Lecture, Luncheon seminar, and Practical Course (analysis)
4 (SUN)	Presentation, Closing

*The program starts around 17:00 on September 1 and ends around 12:00 on September 4.

[How to Apply]

Please send the application form (see below) to RcMcD by e-mail.

http://www.mls.sci.hiroshima-u.ac.jp/chrom/ja/edu_ss.html

[Deadline]

June 30 (THU)

* As the number of participants is limited to 16, there may be selection.

We will contact the applicants by the end of July.

[Support for your Travel and Accommodation]

RcMcD will support the travel fee and accommodation expenses.

*For international participants: please ask for details.

*This program is partially supported by JST Sakura Exchange Program in Science 2016

Research Center for the Mathematics on Chromatin Live Dynamics (RcMcD), Hiroshima University

E-mail: rcmcd@hiroshima-u.ac.jp

TEL/FAX: +81-82-424-7898

<http://www.mls.sci.hiroshima-u.ac.jp/chrom/ja/index.html>