

## Toward a comprehensive understanding of a global genetic network within a cell

Hiroshima Research Center for Healthy Aging (HiHA)

主催：広島大学健康長寿研究拠点

HIROSHIMA UNIVERSITY

15:00-15:30 **Yoshikazu Ohya (The University of Tokyo)**

*chair: Seiji Kawamoto*

High-dimensional and-single cell phenotyping in  
*Saccharomyces cerevisiae*

15:30-16:00 **Hisao Moriya (Okayama University)**

*chair: Masaki Mizunuma*

Consequences of protein overexpression – approach  
by genetic tug-of-war method

16:00-16:15 **Sheena Li (Riken Institute)**

*chair: Masaru Ueno*

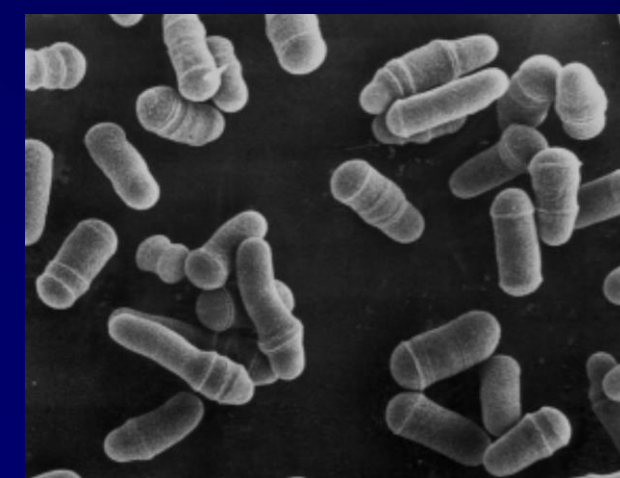
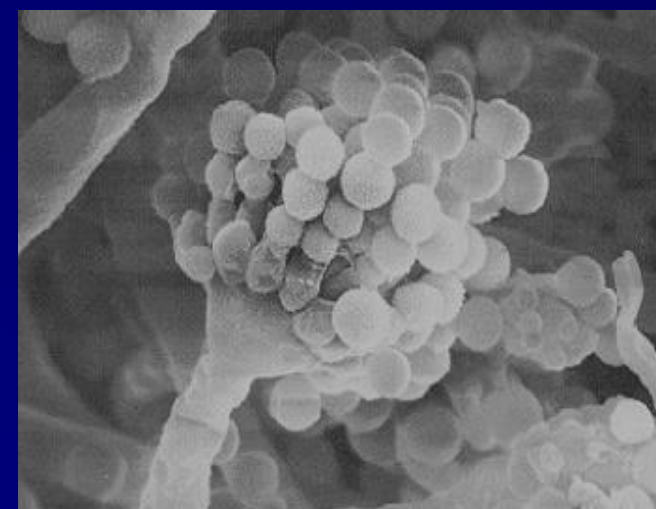
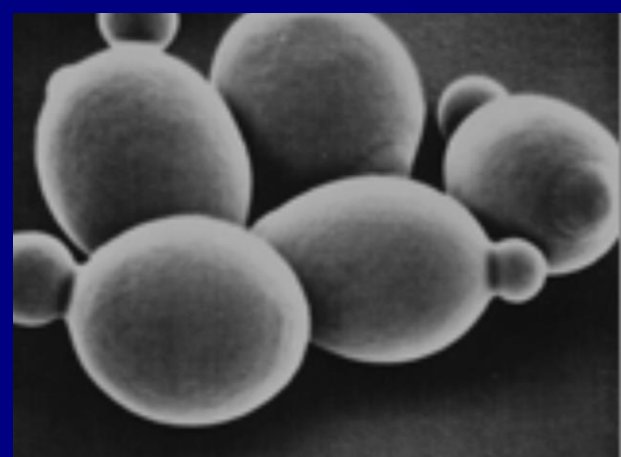
Target identification of compounds using an integrated  
chemical genetic approach

===16:15-16:30 break===

16:30-17:30 **Charlie Boone (University of Toronto)**

*chair: Takashi Toda*

A global genetic interaction network maps a wiring diagram  
of cellular function



**開催日時：平成 29 年 1 月 13 日(金) 15:00-17:30**

**会場：広島大学先端科学総合研究棟 3F 302S会議室**

お問い合わせ先

○広島大学大学院先端物質科学研究科分子生命機能科学専攻

・広島大学健康長寿研究拠点：河本 正次（代表），事務担当：松本

連絡先：E-mail [tomako@hiroshima-u.ac.jp](mailto:tomako@hiroshima-u.ac.jp) TEL 082-424-7867